

1

**Illuminable pushbutton, mounting hole diameter 9.1 mm, 24 V/0.5 A**



**Technical data**

**General information**

Form of lens protruding lens  
 Colour of lens see order block  
 Form of collar round

**Dimensions**

Diameter of collar 11 mm  
 Overall height 7 mm  
 Mounting depth 25 mm  
 Mounting hole 9.1 mm

**Mechanical design**

Mounting ring nut  
 Terminals solder terminals  
 Contact system bridge contact  
 Contact function momentary  
 Contact arrangement 1 NC + 1 NO  
 Contact materials Au  
 Illuminability see order block  
 Lamp socket no

**Mechanical characteristics**

Operating force max. 5 N  
 Operating travel 1.5 mm  
 Switching travel NC 0.5 mm  
 Switching travel NO 1 mm  
 Robustness min. 100 N

**Electrical characteristics**

Rated voltage AC/DC max. 24 V  
 Rated voltage DC max. 24 V

Rated current max. 0.5 A  
 Contact resistance when new max. 50 mΩ  
 Contact resistance acc. to life max. 300 mΩ  
 Bouncing time max. 10 ms  
 Lamp voltage see order block

**Other specifications**

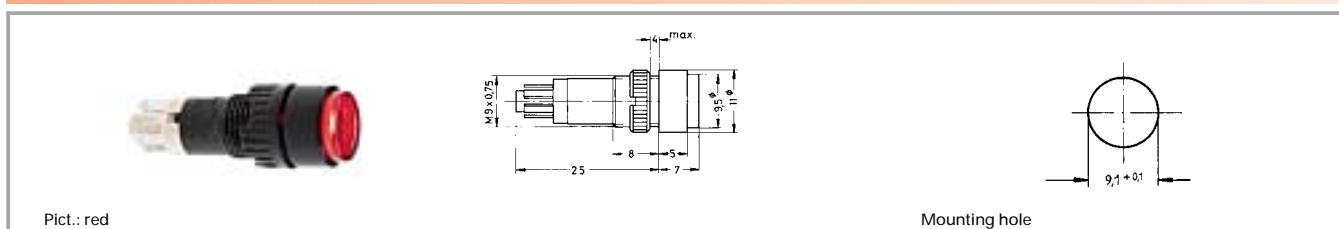
Operating life key switch 200000  
 Operating life filament lamp see order block  
 Degree of protection from front side IP40  
 Ambient temp. operating min. -25 °C  
 Ambient temp. operating max. +70 °C  
 Storage temperature min. -40 °C  
 Storage temperature max. +80 °C  
 Resistance to constant environment according to IEC 600 68-2-3 and 2-30  
 Soldering temperature max. 350 °C  
 Resistance at variable environment according to IEC 600 68-2-14 and 2-33  
 Weight 3 g  
 Soldering time max. 3 sec.

Other Pushb.

**Accessories Illuminable pushbutton, mounting hole diameter 9.1 mm, 24 V/0.5 A**

Description	Photo	Order no.	Page
Fixing spanner M 9, M 10		5.58.002.025/0105	5 - 25

## Illuminable pushbutton, mounting hole diameter 9.1 mm, 24 V/0.5 A



Contact arrangement	Contact function	Illuminability	Lamp voltage	Colour of lens	Order no. complete
1 NC + 1 NO	momentary	filament lamp	24 V / 0.7 W	transparent colourless	1.15.106.021/1002
1 NC + 1 NO	momentary	filament lamp	24 V / 0.7 W	transparent red	1.15.106.021/1307
1 NC + 1 NO	momentary	filament lamp	24 V / 0.7 W	transparent yellow	1.15.106.021/1403
1 NC + 1 NO	momentary	filament lamp	24 V / 0.7 W	transparent green	1.15.106.021/1510
1 NC + 1 NO	momentary	no		opaque black	1.15.106.301/0104
1 NC + 1 NO	momentary	no		opaque white	1.15.106.301/0214
1 NC + 1 NO	momentary	no		opaque red	1.15.106.301/0313
1 NC + 1 NO	momentary	no		opaque yellow	1.15.106.301/0410
1 NC + 1 NO	momentary	no		opaque green	1.15.106.301/0518
1 NC + 1 NO	momentary	LED super bright	2 V/10 mA external series resistor	transparent white	1.15.106.505/1000
1 NC + 1 NO	momentary	LED super bright	2 V/10 mA external series resistor	transparent red	<b>1.15.106.501/1300</b>
1 NC + 1 NO	momentary	LED super bright	2 V/10 mA external series resistor	transparent yellow	<b>1.15.106.503/1400</b>
1 NC + 1 NO	momentary	LED super bright	2 V/10 mA external series resistor	transparent green	1.15.106.502/1500
1 NC + 1 NO	momentary	LED super bright	2 V/10 mA external series resistor	transparent blue	1.15.106.504/1600

Technical data see page 1 - 78

Recommended values for external series resistor for LED:

- 5 - 7 V = 270 Ω, 0.25 W
- 12 - 14 V = 680 Ω, 0.5 W
- 24 - 28 V = 1500 Ω, 1 W

1

Other Pushb.