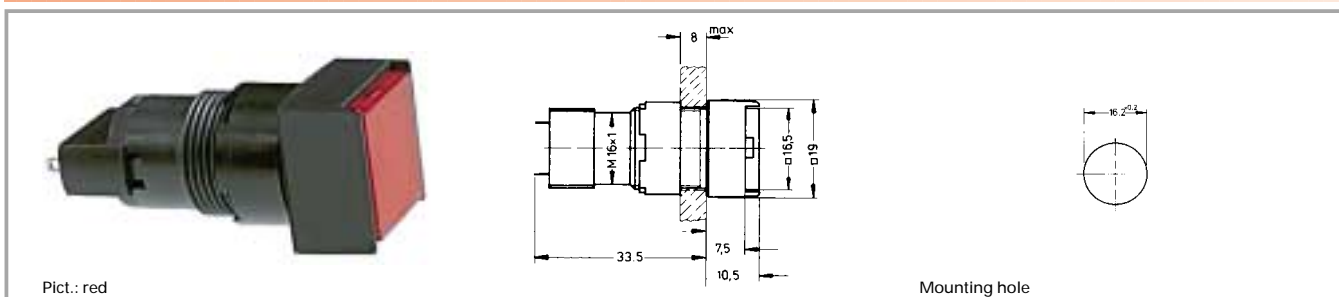


1

LUMOTAST 75 signal lamp IP65



Technical data

General information

Form of lens see order block
 Form of collar see order block
 Diameter of collar see order block

Dimensions

Length of collar see order block
 Width of collar see order block
 Overall height 10.5 mm
 Mounting depth 33.5 mm
 Mounting hole 16.2 mm

Mechanical design

Mounting ring nut
 Terminals solder terminals, tin-plated
 Lamp socket T 4.5
 Lamp filament lamp / LED

Electrical characteristics

Voltage limit max. 42 V
 Power limit max. 1.2 W

Other specifications








Degree of protection from front side IP65
 Weight 5 g
 Approvals ENEC 25 T 55 (70), UL, CSA
 Ambient temp. operating min. -25 °C
 Ambient temp. operating max. +55 °C
 Storage temperature min. -40 °C
 Storage temperature max. +80 °C

LUMO
75 (65)

Accessories LUMOTAST 75 signal lamp IP65

Description	Photo	Order no.	Page
Filament lamp, T 4.5 base, 12 V		1.90.100.022/0000	5 - 6
Filament lamp, T 4.5 base, 24 V		1.90.100.023/0000	5 - 6
LED T 4.5 superbright, red, 24 V		1.90.690.331/0000	5 - 20
LED T 4.5 superbright, green, 24 V		1.90.690.332/0000	5 - 20
LED T 4.5 superbright, yellow, 24 V		1.90.690.333/0000	5 - 20
LED T 4.5 superbright, blue, 24 V		1.90.690.334/0000	5 - 20
LED T 4.5 superbright, white, 24 V		1.90.690.335/0000	5 - 20
LED T 4.5, red, 3 V		1.90.692.001/0000	5 - 19

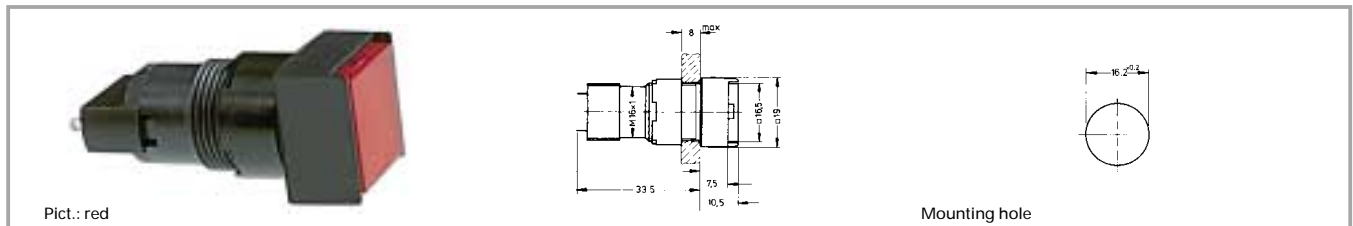
Accessories LUMOTAST 75 signal lamp IP65

Description	Photo	Order no.	Page
LED T 4.5, yellow, 3 V		1.90.692.003/0000	5 - 19
Lamp extractor for T 4.5/5.5, lamp diameter 4 mm		1.90.900.002/0000	5 - 24
Lamp extractor for lamp diameter 5-6 mm		1.90.900.004/0000	5 - 24
Blanking cap, black, to cover spare holes, dimensions 18 x 18 mm		5.52.006.020/0103	5 - 33
Blanking cap, black, to cover spare holes, dimensions 18 x 24 mm		5.52.006.021/0100	5 - 33
Blanking cap, black, to cover spare holes, round 18 mm		5.52.006.022/0100	5 - 33
Fixing spanner M 15, M 16		5.58.002.019/0105	5 - 25

1

LUMO
75 (65)

LUMOTAST 75 signal lamp IP65, flush lens, square collar



Voltage limit max.	Power limit max.	Lamp socket	Form of collar	Order no. without lens	Note
42 V	1.2 W	T 4.5	square	1.65.111.066/0000	Please include the desired lens in your order.

Technical data see page 1 - 62

- Lens, square, transparent colourless, for filament lamp or LED: 5.49.277.052/1002
- Lens, square, transparent red, for LED: 5.49.277.052/1301
- Lens, square, transparent red, for filament lamp: 5.49.277.052/1303
- Lens, square, transparent yellow, for filament lamp or LED: 5.49.277.052/1402
- Lens, square, transparent green, for filament lamp: 5.49.277.052/1502
- Lens, square, transparent green, for LED: 5.49.277.052/1503
- Lens, square, transparent blue, for filament lamp: 5.49.277.052/1601

Accessories:

Legend insert, square: 5.70.629.000/2000

For assembly, press the lens as far as possible.

1

LUMOTAST 75 signal lamp IP65, protruding lens, square collar



Voltage limit max.	Power limit max.	Lamp socket	Form of collar	Order no. without lens	Note
42 V	1.2 W	T 4.5	square	1.65.111.086/0000	Please include the desired lens in your order.

Technical data see page 1 - 62

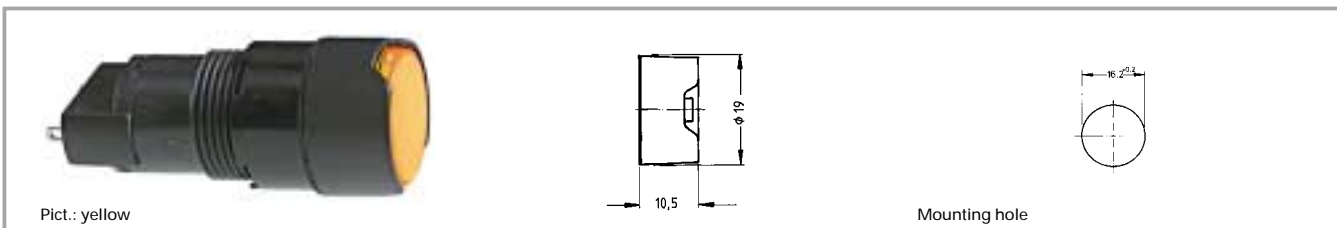
- Lens, square, transparent colourless, for filament lamp or LED: 5.49.277.052/1002
- Lens, square, transparent red, for LED: 5.49.277.052/1301
- Lens, square, transparent red, for filament lamp: 5.49.277.052/1303
- Lens, square, transparent yellow, for filament lamp or LED: 5.49.277.052/1402
- Lens, square, transparent green, for filament lamp: 5.49.277.052/1502
- Lens, square, transparent green, for LED: 5.49.277.052/1503
- Lens, square, transparent blue, for filament lamp: 5.49.277.052/1601

LUMO
75 (65)

Accessories:
Legend insert, round, without legend: 5.70.629.000/2000

For assembly, press the lens as far as possible.

LUMOTAST 75 signal lamp IP65, flush lens, round collar



Voltage limit max.	Power limit max.	Lamp socket	Form of collar	Order no. without lens	Note
42 V	1.2 W	T 4.5	round	1.65.116.096/0000	Please include the desired lens in your order.

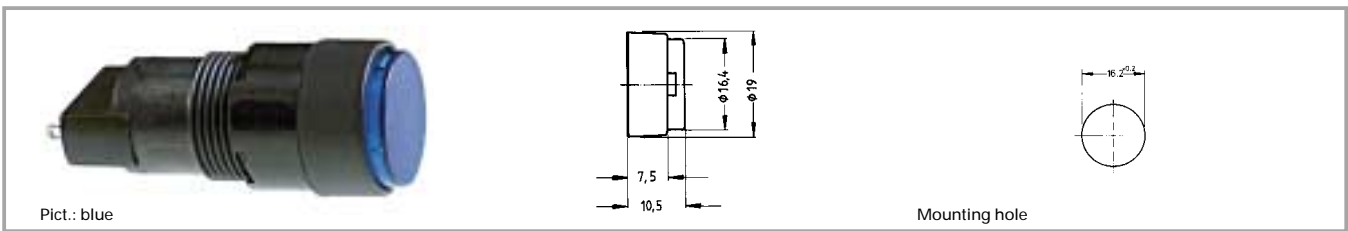
Technical data see page 1 - 62

- Lens, round, transparent colourless, for filament lamp or LED: 5.49.259.013/1002
- Lens, round, transparent red, for LED: 5.49.259.013/1301
- Lens, round, transparent red, for filament lamp: 5.49.259.013/1303
- Lens, round, transparent yellow, for filament lamp or LED: 5.49.259.013/1402
- Lens, round, transparent green, for filament lamp: 5.49.259.013/1502
- Lens, round, transparent green, for LED: 5.49.259.013/1503
- Lens, round, transparent blue, for filament lamp: 5.49.259.013/1601

Accessories:
Legend insert, round, without legend: 5.70.059.000/2000

For assembly, press the lens as far as possible.

LUMOTAST 75 signal lamp IP65, protruding lens, round collar



Voltage limit max.	Power limit max.	Lamp socket	Form of collar	Order no. without lens	Note
42 V	1.2 W	T 4.5	round	1.65.111.076/0000	Please include the desired lens in your order.

Technical data see page 1 - 62

- Lens, round, transparent colourless, for filament lamp or LED: 5.49.259.013/1002
- Lens, round, transparent red, for LED: 5.49.259.013/1301
- Lens, round, transparent red, for filament lamp: 5.49.259.013/1303
- Lens, round, transparent yellow, for filament lamp or LED: 5.49.259.013/1402
- Lens, round, transparent green, for filament lamp: 5.49.259.013/1502
- Lens, round, transparent green, for LED: 5.49.259.013/1503
- Lens, round, transparent blue, for filament lamp: 5.49.259.013/1601

Accessories:

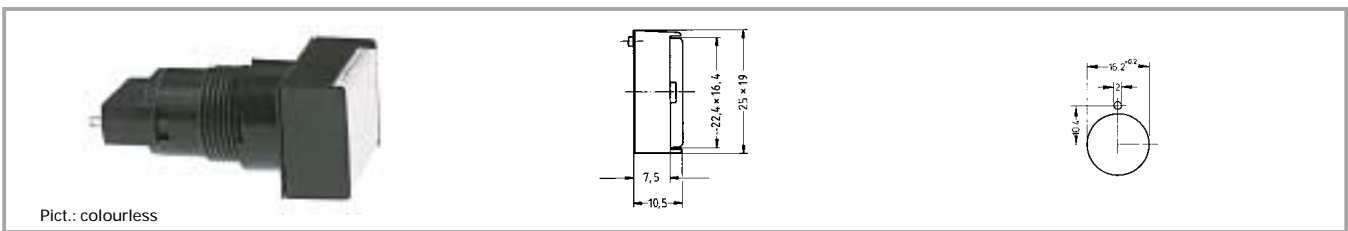
Legend insert, round, without legend: 5.70.059.000/2000

For assembly, press the lens as far as possible.

1

LUMO
75 (65)

LUMOTAST 75 signal lamp IP65, flush lens, rectangular collar



Voltage limit max.	Power limit max.	Lamp socket	Form of collar	Order no. without lens	Note
42 V	1.2 W	T 4.5	rectangular	1.65.111.056/0000	Please include the desired lens in your order.

Technical data see page 1 - 62

- Lens, rectangular, transparent colourless, for filament lamp or LED: 5.49.277.058/1002
- Lens, rectangular, transparent red, for LED: 5.49.277.058/1301
- Lens, rectangular, transparent red, for filament lamp: 5.49.277.058/1303
- Lens, rectangular, transparent yellow, for filament lamp or LED: 5.49.277.058/1402
- Lens, rectangular, transparent green, for filament lamp: 5.49.277.058/1502
- Lens, rectangular, transparent green, for LED: 5.49.277.058/1503
- Lens, rectangular, transparent blue, for filament lamp: 5.49.277.058/1601

Accessories:

Legend insert, rectangular without legend: 5.70.630.000/2000

For assembly, press the lens as far as possible.