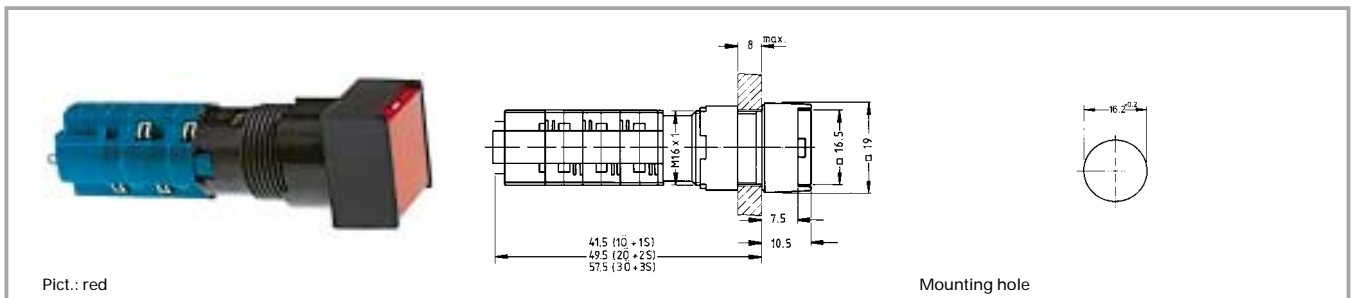


LUMOTAST 75 illuminated pushbutton IP65



Technical data

General information

Form of lens see order block
 Colour of lens see order block
 Form of collar see order block
 Colour of collar black

Dimensions

Length of collar see order block
 Diameter of collar see order block
 Width of collar see order block
 Overall height 10.5 mm
 Mounting depth see order block
 Mounting hole 16.2 mm

Mechanical design

Mounting ring nut
 Terminals solder terminals, tin-plated
 Contact system snap-action bridge contact
 Contact function see order block
 Contact arrangement see order block
 Contact materials Ag
 Illuminability yes
 Lamp socket T 4.5

Mechanical characteristics

Operating force 3 ... 6.5 N
 Operating travel 2.5 mm
 Switching travel NC 1.8 mm
 Switching travel NO 0.9 mm
 Robustness min. 100 N

Electrical characteristics

Rated voltage AC max. 250 V
 Rated voltage DC max. 220 V
 Rated voltage AC/DC min. 12 V

Rated current AC max. 4 A
 Rated current DC max. 0.2 A
 Rated current AC/DC min. 5 mA
 Contact resistance acc. to life max. 200 mΩ
 Protection class II
 ESD-strength min. 14 kV

Other specifications

Operating life, at 250 V/2 A (operations) 200000 (momentary), 50000 (latching)
 Operating life, at 250 V/4 A (operations) 60000 (momentary)
 Degree of protection from front side IP65
 Ambient temp. operating min. -25 °C
 Ambient temp. operating without lamp max. +70 °C
 Ambient temp. operating with lamp max. +55 °C
 Storage temperature min. -40 °C
 Storage temperature max. +80 °C
 Resistance to constant environment according to IEC 600 68-2-3 and 2-30
 Resistance at variable environment according to IEC 600 68-2-14 and 2-33
 Weight 15 g
 Approvals ENEC 25 T 55 (70), UL, CSA
 Flame class acc. to UL 94 V 0
 Hot wire ignition acc. to IEC 695-2-1 yes

LUMO 75 (65)

Accessories LUMOTAST 75 illuminated pushbutton IP65

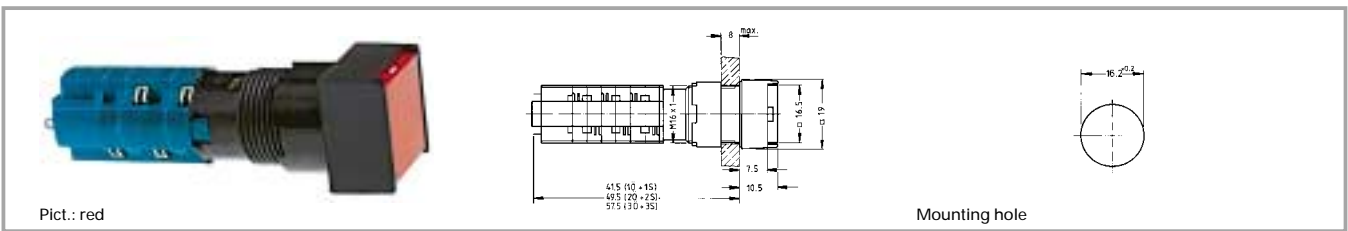
Description	Photo	Order no.	Page
Filament lamp, T 4.5 base, 12 V		1.90.100.022/0000	5 - 6
Filament lamp, T 4.5 base, 24 V		1.90.100.023/0000	5 - 6

Accessories LUMOTAST 75 illuminated pushbutton IP65

Description	Photo	Order no.	Page
LED T 4.5 superbright, red, 24 V		1.90.690.331/0000	5 - 20
LED T 4.5 superbright, green, 24 V		1.90.690.332/0000	5 - 20
LED T 4.5 superbright, yellow, 24 V		1.90.690.333/0000	5 - 20
LED T 4.5 superbright, blue, 24 V		1.90.690.334/0000	5 - 20
LED T 4.5 superbright, white, 24 V		1.90.690.335/0000	5 - 20
LED T 4.5, red, 3 V		1.90.692.001/0000	5 - 19
LED T 4.5, green, 3 V		1.90.692.002/0000	5 - 19
LED T 4.5, yellow, 3 V		1.90.692.003/0000	5 - 19
Lamp extractor for T 4.5/5.5, lamp diameter 4 mm		1.90.900.002/0000	5 - 24
Lamp extractor for lamp diameter 5-6 mm		1.90.900.004/0000	5 - 24
Protective cap (for 18 x 24 collar)		5.05.800.027/0000	5 - 30
Blanking cap, black, to cover spare holes, dimensions 18 x 18 mm		5.52.006.020/0103	5 - 33
Blanking cap, black, to cover spare holes, dimensions 18 x 24 mm		5.52.006.021/0100	5 - 33
Blanking cap, black, to cover spare holes, round 18 mm		5.52.006.022/0100	5 - 33
Fixing spanner M 15, M 16		5.58.002.019/0105	5 - 25

1

LUMOTAST 75 illuminated pushbutton IP65, flush lens, square collar



Contact arrangement	Contact function	Colour of collar	Order no. without lens	Note
1 NC + 1 NO	momentary	black	1.15.108.276/0000	Please include the desired lens in your order.
1 NC + 1 NO	latching	black	1.15.108.376/0000	Please include the desired lens in your order.
2 NC + 2 NO	momentary	black	1.15.108.277/0000	Please include the desired lens in your order.
2 NC + 2 NO	latching	black	1.15.108.377/0000	Please include the desired lens in your order.
3 NC + 3 NO	momentary	black	1.15.108.278/0000	Please include the desired lens in your order.
3 NC + 3 NO	latching	black	1.15.108.378/0000	Please include the desired lens in your order.

LUMO
75 (65)

Technical data see page 1 - 54

Lens, square, transparent colourless, for filament lamp or LED: **5.49.277.052/1002**

Lens, square, transparent red, for LED: **5.49.277.052/1301**

Lens, square, transparent red, for filament lamp: **5.49.277.052/1303**

Lens, square, transparent yellow, for filament lamp or LED: **5.49.277.052/1402**

Lens, square, transparent green, for filament lamp: **5.49.277.052/1502**

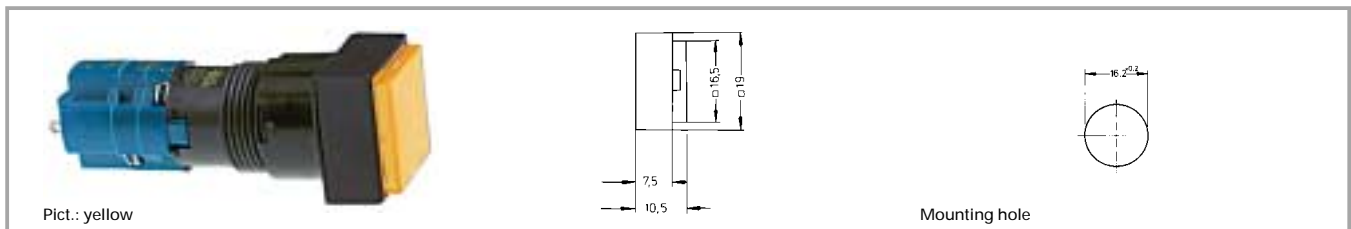
Lens, square, transparent green, for LED: **5.49.277.052/1503**

Lens, square, transparent blue, for filament lamp: **5.49.277.052/1601**

Accessories:

Legend insert, square, without legend: 5.70.629.000/2000

LUMOTAST 75 illuminated pushbutton IP65, protruding lens, square collar



Contact arrangement	Contact function	Colour of collar	Order no. without lens	Note
1 NC + 1 NO	momentary	black	1.15.108.281/0000	Please include the desired lens in your order.
1 NC + 1 NO	latching	black	1.15.108.381/0000	Please include the desired lens in your order.
2 NC + 2 NO	momentary	black	1.15.108.282/0000	Please include the desired lens in your order.
2 NC + 2 NO	latching	black	1.15.108.382/0000	Please include the desired lens in your order.
3 NC + 3 NO	momentary	black	1.15.108.283/0000	Please include the desired lens in your order.
3 NC + 3 NO	latching	black	1.15.108.383/0000	Please include the desired lens in your order.

Technical data see page 1 - 54

Lens, square, transparent colourless, for filament lamp or LED: **5.49.277.052/1002**

Lens, square, transparent red, for LED: **5.49.277.052/1301**

Lens, square, transparent red, for filament lamp: **5.49.277.052/1303**

Lens, square, transparent yellow, for filament lamp or LED: **5.49.277.052/1402**

Lens, square, transparent green, for filament lamp: **5.49.277.052/1502**

Lens, square, transparent green, for LED: **5.49.277.052/1503**

Lens, square, transparent blue, for filament lamp: **5.49.277.052/1601**

Accessories:

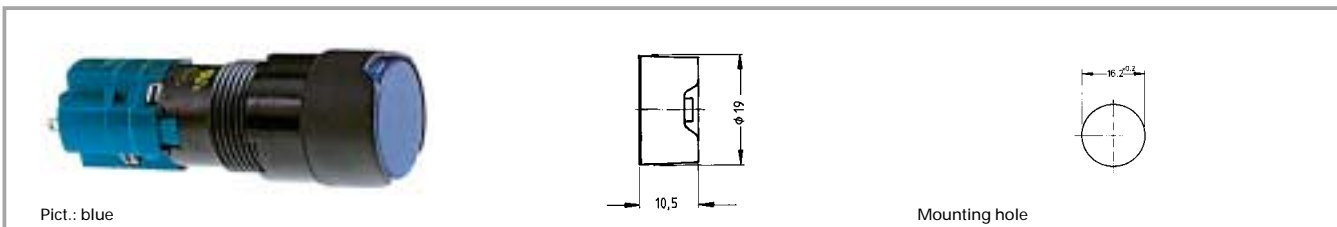
Legend insert, square, without legend: 5.70.629.000/2000

1

LUMO
75 (65)

1

LUMOTAST 75 illuminated pushbutton IP65, flush lens, round collar



Contact arrangement	Contact function	Colour of collar	Order no. without lens	Note
1 NC + 1 NO	momentary	black	1.15.108.481/0000	Please include the desired lens in your order.
1 NC + 1 NO	latching	black	1.15.108.981/0000	Please include the desired lens in your order.
2 NC + 2 NO	momentary	black	1.15.108.482/0000	Please include the desired lens in your order.
2 NC + 2 NO	latching	black	1.15.108.982/0000	Please include the desired lens in your order.
3 NC + 3 NO	momentary	black	1.15.108.483/0000	Please include the desired lens in your order.
3 NC + 3 NO	latching	black	1.15.108.983/0000	Please include the desired lens in your order.

LUMO
75 (65)

Technical data see page 1 - 54

Lens, round, transparent colourless, for filament lamp or LED: **5.49.259.013/1002**

Lens, round, transparent red, for LED: **5.49.259.013/1301**

Lens, round, transparent red, for filament lamp: **5.49.259.013/1303**

Lens, round, transparent yellow, for filament lamp or LED: **5.49.259.013/1402**

Lens, round, transparent green, for filament lamp: **5.49.259.013/1502**

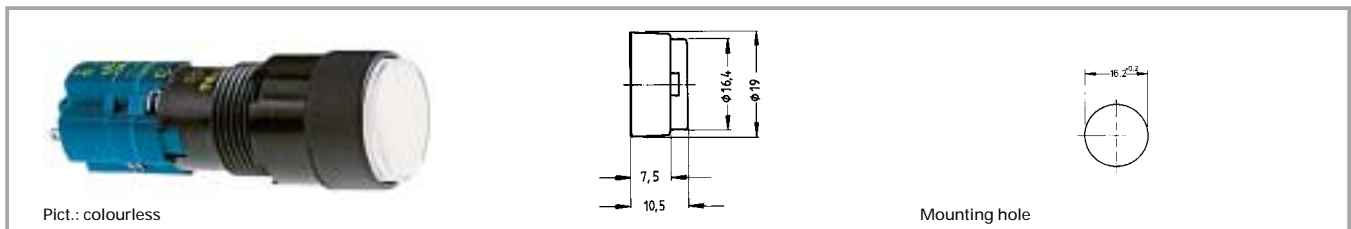
Lens, round, transparent green, for LED: **5.49.259.013/1503**

Lens, round, transparent blue, for filament lamp: **5.49.259.013/1601**

Accessories:

Legend insert, round, without legend: 5.70.059.000/2000

LUMOTAST 75 illuminated pushbutton IP65, protruding lens, round collar



Contact arrangement	Contact function	Colour of collar	Order no. without lens	Note
1 NC + 1 NO	momentary	black	1.15.108.476/0000	Please include the desired lens in your order.
1 NC + 1 NO	latching	black	1.15.108.976/0000	Please include the desired lens in your order.
2 NC + 2 NO	momentary	black	1.15.108.477/0000	Please include the desired lens in your order.
2 NC + 2 NO	latching	black	1.15.108.977/0000	Please include the desired lens in your order.
3 NC + 3 NO	momentary	black	1.15.108.478/0000	Please include the desired lens in your order.
3 NC + 3 NO	latching	black	1.15.108.978/0000	Please include the desired lens in your order.

Technical data see page 1 - 54

Lens, round, transparent colourless, for filament lamp or LED: **5.49.259.013/1002**

Lens, round, transparent red, for LED: **5.49.259.013/1301**

Lens, round, transparent red, for filament lamp: **5.49.259.013/1303**

Lens, round, transparent yellow, for filament lamp or LED: **5.49.259.013/1402**

Lens, round, transparent green, for filament lamp: **5.49.259.013/1502**

Lens, round, transparent green, for LED: **5.49.259.013/1503**

Lens, round, transparent blue, for filament lamp: **5.49.259.013/1601**

Accessories:

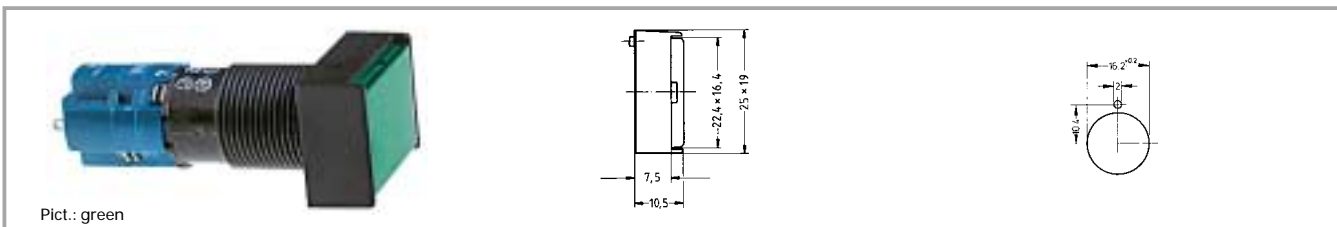
Legend insert, round, without legend: 5.70.059.000/2000

1

LUMO
75 (65)

1

LUMOTAST 75 illuminated pushbutton IP65, flush lens, rectangular collar



Pict.: green

Contact arrangement	Contact function	Colour of collar	Order no. without lens	Note
1 NC + 1 NO	momentary	black	1.15.108.076/0000	Please include the desired lens in your order.
1 NC + 1 NO	latching	black	1.15.108.176/0000	Please include the desired lens in your order.
2 NC + 2 NO	momentary	black	1.15.108.077/0000	Please include the desired lens in your order.
2 NC + 2 NO	latching	black	1.15.108.177/0000	Please include the desired lens in your order.
3 NC + 3 NO	momentary	black	1.15.108.078/0000	Please include the desired lens in your order.
3 NC + 3 NO	latching	black	1.15.108.178/0000	Please include the desired lens in your order.

LUMO
75 (65)

Technical data see page 1 - 54

Lens, rectangular, transparent colourless, for filament lamp or LED: **5.49.277.058/1002**

Lens, rectangular, transparent red, for LED: **5.49.277.058/1301**

Lens, rectangular, transparent red, for filament lamp: **5.49.277.058/1303**

Lens, rectangular, transparent yellow, for filament lamp or LED: **5.49.277.058/1402**

Lens, rectangular, transparent green, for filament lamp: **5.49.277.058/1502**

Lens, rectangular, transparent green, for LED: **5.49.277.058/1503**

Lens, rectangular, transparent blue, for filament lamp: **5.49.277.058/1601**

Accessories:

Legend insert, rectangular without legend: 5.70.630.000/2000