

1

LUMOTAST 25 emergency stop pushbutton



Pict.: black collar

Panel cut-out

Technical data

LUMO
25

General information

Colour of lens opaque red
Form of collar square
Colour of collar see order block

Dimensions

Length of collar 25 mm
Width of collar 25 mm
Overall height 18.5 mm
Mounting depth with
connector 30.7 mm
Mounting depth with
plug-in socket 33.4 mm
Mounting hole 16.2 mm

Mechanical design

Mounting ring nut
Terminals pin connector 4-pol./
plug-in socket
Contact system snap-action contact
Contact function latching
Contact arrangement 2 NC (forcibly actuated)
Contact materials Au
Illuminability no

Mechanical characteristics

Operating force max. 10 N
Operating travel 2.6 mm
Switching travel 2 mm
Robustness min. 100 N

Electrical characteristics

Rated voltage AC/DC max. 25 V
Rated voltage AC/DC min. 0.02 V
Rated current AC/DC max. 1 A , 100 mA rated current
Rated current AC/DC min. 0.01 mA
Contact resistance max. 100 mΩ
Bouncing time max. 10 ms




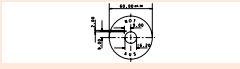
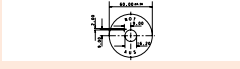
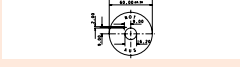
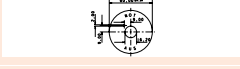
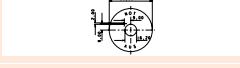

Other specifications

Operating life 15000
Degree of protection
from front side IP65
Ambient temp. operating
min. -25 °C
Ambient temp. operating
max. +70 °C
Storage temperature min. -40 °C
Storage temperature max. +80 °C
Resistance to constant
environment according to
IEC 600 68-2-3 and 2-30
Resistance at variable
environment according to
IEC 600 68-2-14 and 2-33
Weight 9 g
Approvals TÜV/UL according to
EN 60947-5-5 and -5-1/A2,
UL 508

Accessories LUMOTAST 25 emergency stop pushbutton

Description	Photo	Order no.	Page
Plug-in socket for PCB		5.00.645.036/0000	5 - 28
Cable (flat ribbon cable 10 cm with socket connector and male quick connector, AMP 4-pin)		5.03.771.306/0000	5 - 27
Blanking cap complete with sealing disc and ring nut, square		5.05.800.049/0100	5 - 33
Label holder, flush, for square collar		5.07.620.004/0000	2 - 76

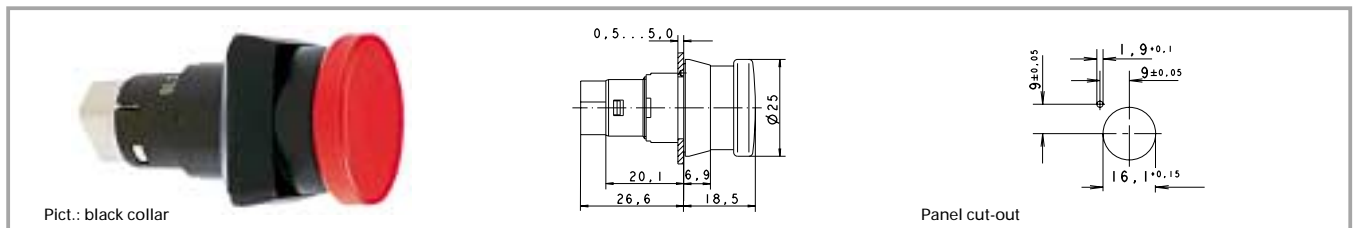
Accessories LUMOTAST 25 emergency stop pushbutton

Description	Photo	Order no.	Page
Flat ribbon cable, 4-wire, 1 m long		5.37.700.124/0000	5 - 27
Fixing spanner M 15, M 16		5.58.002.019/0105	5 - 25
Legend label 23 x 16 for label holder, without legend		5.73.111.000/0000	2 - 76
Emergency stop label, yellow, adhesive, round 60 mm, without legend		5.76.204.425/0400	
Emergency stop label, yellow, adhesive, round 60 mm, with legend "NOT-AUS"		5.76.204.426/0400	
Emergency stop label, yellow, adhesive, round 60 mm, with legend "ARRET-D'URGENCE"		5.76.204.427/0400	
Emergency stop label, yellow, adhesive, round 60 mm, with legend "EMERGENCY-STOP"		5.76.204.428/0400	
Emergency stop label, yellow, adhesive, round 60 mm, with legend "ARRESTO-D'EMERGENZA"		5.76.204.429/0400	
Socket connector, 4-pin		5.92.025.368/0000	5 - 26

1

LUMO 25

LUMOTAST 25 emergency stop pushbutton, ring nut fixing



Contact function	Contact arrangement	Colour of collar	Order no. complete	Order no. single parts	
				Housing	Lens
latching	2 NC (forcibly actuated)	black	1.15.154.006/0301		
latching	2 NC (forcibly actuated)	yellow	1.15.154.016/0301		

Technical data see page 1 - 32