

Signal lamps with lamp socket W 2 x 4.6d, 9.1 mm



Technical data

General information

Form of lens round
 Colour of lens see order block
 Diameter of collar 11 mm

Electrical characteristics

Voltage limit max. 42 V
 Power limit max. 1.2 W

Dimensions

Overall height 7 mm
 Mounting depth 25.5 mm
 Mounting hole 9.1 mm

Other specifications

Degree of protection from front side IP40
 Weight 1 g

Mechanical design

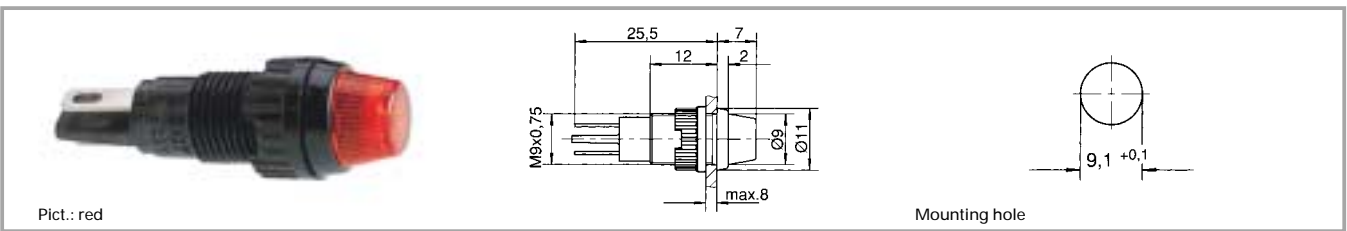
Mounting ring nut
 Terminals quick connector
 A 2.8 x 0.5 tin-plated
 Lamp socket W 2 x 4.6d
 Lamp filament lamp

3

Accessories Signal lamps with lamp socket W 2 x 4.6d, 9.1 mm

With Socket	Description	Photo	Order no.	Page
	Filament lamp, W 2 x 4.6d base, 24 - 30 V		1.90.120.005/0000	5 - 4
	Filament lamp, W 2 x 4.6d base, 60 V		1.90.120.009/0000	5 - 4
	Filament lamp, W 2 x 4.6d base, 48 V		1.90.120.010/0000	5 - 4
	Filament lamp, W 2 x 4.6d base, 24 V		1.90.120.011/0000	5 - 4
	Filament lamp, W 2 x 4.6d base, 12 V		1.90.120.012/0000	5 - 4
	Filament lamp, W 2 x 4.6d base, 6 V		1.90.120.013/0000	5 - 4
	Protective sleeve made of Buna N (NBR), 7 x 30		5.52.011.022/0100	
	Fixing spanner M 9, M 10		5.58.002.025/0105	5 - 25

Signal lamps with lamp socket W 2 x 4.6d, 9.1 mm, round lens



Voltage limit max.	Power limit max.	Lamp	Colour of lens	Order no. complete	Order no. single parts	
					Housing	Lens
42 V	1.2 W	filament lamp	transparent colourless	1.66.001.011/1002	1.66.001.026/0000	5.49.255.002/1002
42 V	1.2 W	filament lamp	transparent red	1.66.001.011/1301	1.66.001.026/0000	5.49.255.002/1301
42 V	1.2 W	filament lamp	transparent yellow	1.66.001.011/1402	1.66.001.026/0000	5.49.255.002/1402
42 V	1.2 W	filament lamp	transparent green	1.66.001.011/1502	1.66.001.026/0000	5.49.255.002/1502
42 V	1.2 W	filament lamp	transparent blue	1.66.001.011/1601	1.66.001.026/0000	5.49.255.002/1601

Technical data see page 3 - 36

Please order luminous elements separately.

3

With Socket