

**Signal lamps with lamp socket T 4.6, 9.1 mm**



**Technical data**

**General information**

Form of lens see order block  
 Colour of lens see order block  
 Diameter of collar 11 mm

**Dimensions**

Overall height see order block  
 Mounting depth 30.5 mm  
 Mounting hole 9.1 mm

**Mechanical design**

Mounting ring nut  
 Terminals solder terminals  
 Lamp socket T 4.6  
 Lamp filament lamp

**Electrical characteristics**

Voltage limit max. 42 V  
 Power limit max. 1 W

**Other specifications**

Degree of protection from front side IP40  
 Weight 1 g

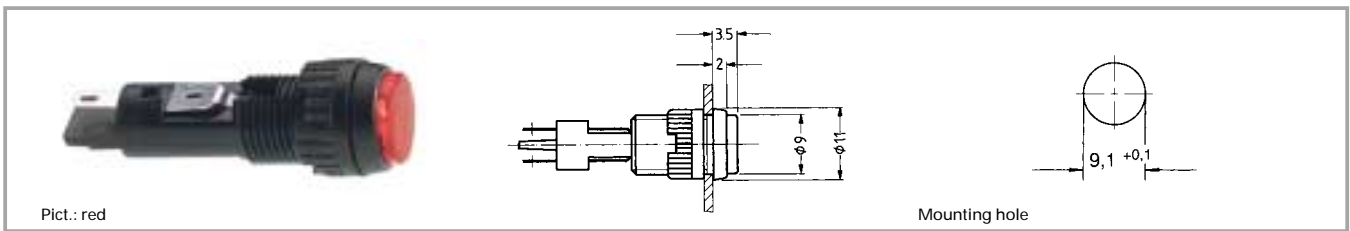
**3**

**Accessories Signal lamps with lamp socket T 4.6, 9.1 mm**

Description	Photo	Order no.	Page
Filament lamp, T 4.6 base, 12 V		1.90.100.012/0000	5 - 6
Filament lamp, T 4.6 base, 24 V		1.90.100.013/0000	5 - 6
Fixing spanner M 9, M 10		5.58.002.025/0105	5 - 25

**With Socket**

**Signal lamps with lamp socket T 4.6, 9.1 mm, round lens**

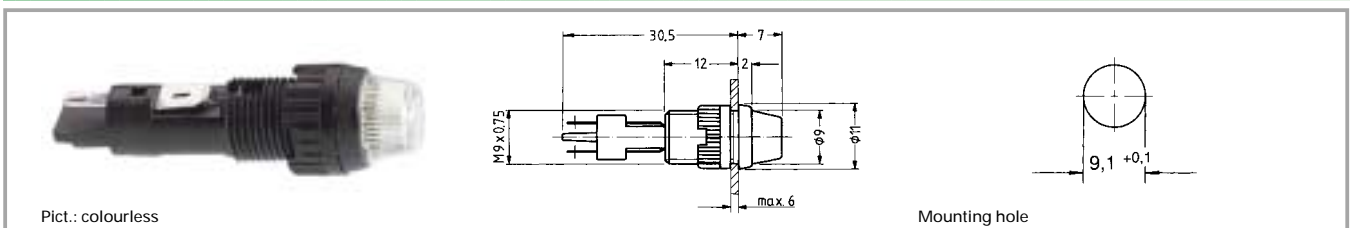


Voltage limit max.	Lamp socket	Lamp	Colour of lens	Order no. complete	Order no. single parts	
					Housing	Lens
42 V	T 4.6	filament lamp	transparent colourless	1.02.157.001/1002	1.02.157.021/0000	5.49.255.001/1002
42 V	T 4.6	filament lamp	transparent red	1.02.157.001/1307	1.02.157.021/0000	5.49.255.001/1307
42 V	T 4.6	filament lamp	transparent yellow	1.02.157.001/1403	1.02.157.021/0000	5.49.255.001/1403
42 V	T 4.6	filament lamp	transparent green	1.02.157.001/1510	1.02.157.021/0000	5.49.255.001/1510

Technical data see page 3 - 38

Please order luminous elements separately.

**Signal lamps with lamp socket T 4.6, 9.1 mm, round lens**



Voltage limit max.	Lamp socket	Lamp	Colour of lens	Order no. complete	Order no. single parts	
					Housing	Lens
42 V	T 4.6	filament lamp	transparent colourless	1.02.157.011/1002	1.02.157.021/0000	5.49.255.002/1002
42 V	T 4.6	filament lamp	transparent red	1.02.157.011/1301	1.02.157.021/0000	5.49.255.002/1301
42 V	T 4.6	filament lamp	transparent yellow	1.02.157.011/1402	1.02.157.021/0000	5.49.255.002/1402
42 V	T 4.6	filament lamp	transparent green	1.02.157.011/1502	1.02.157.021/0000	5.49.255.002/1502

Technical data see page 3 - 38

Please order luminous elements separately.

3

With Socket