

Signal lamps with integrated LED, 9.1 mm



Technical data

General information

Form of lens round protruding
 Colour of lens see order block
 Diameter of collar 11 mm

Dimensions

Overall height see order block
 Mounting depth 30.5 mm
 Mounting hole 9.1 mm

Mechanical design

Mounting ring nut
 Terminals solder terminals
 Lamp socket no
 Lamp see order block

Electrical characteristics

Operating voltage
 U_B 24 - 28 V
 Forward voltage
 U_F at 25°C at 20 mA forward current
 2.4 V

Reverse voltage
 U_R at 25°C 3 V
 Reverse current
 I_R at 25°C 100 μ A
 Power dissipation
 P_{tot} at 25°C max. 120 mW
 Light intensity at 20 mA see order block

Other specifications

Degree of protection from front side IP40
 Weight 1 g

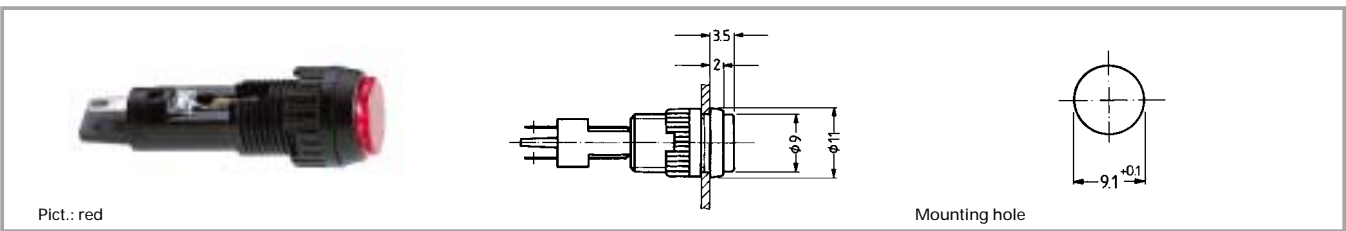
3

Integr.
LED

Accessories Signal lamps with integrated LED, 9.1 mm

Description	Photo	Order no.	Page
Fixing spanner M 9, M 10		5.58.002.025/0105	5 - 25

Signal lamps with integrated LED, 9.1 mm, round lens



Operating voltage U_B	Light intensity at 20 mA	Lamp	Colour of lens	Order no.
24 - 28 V	200 mcd	LED super bright red	transparent red	1.02.157.105/1300
24 - 28 V	1000 mcd	LED super bright green	transparent green	1.02.157.110/1500
24 - 28 V	200 mcd	LED super bright yellow	transparent yellow	1.02.157.115/1400
24 - 28 V	300 mcd	LED super bright blue	transparent blue	1.02.157.120/1600
24 - 28 V	400 mcd	LED super bright white	transparent colourless	1.02.157.125/1000
24 - 28 V		LED green	transparent green	1.02.157.109/1509

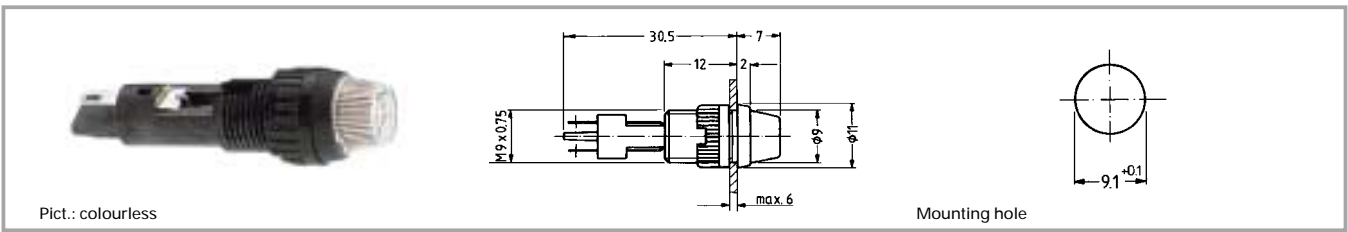
Technical data see page 3 - 14

Accessories:

Fixing spanner M 9, M 10: **5.58.002.025/0105**

With integrated series resistor. Other voltages on request.

Signal lamps with integrated LED, 9.1 mm, round protruding lens



Operating voltage U _B	Light intensity at 20 mA	Lamp	Colour of lens	Order no.
24 - 28 V	200 mcd	LED super bright red	transparent red	1.02.157.505/1300
24 - 28 V	1000 mcd	LED super bright green	transparent green	1.02.157.510/1500
24 - 28 V	200 mcd	LED super bright yellow	transparent yellow	1.02.157.515/1400
24 - 28 V	300 mcd	LED super bright blue	transparent blue	1.02.157.520/1600
24 - 28 V	400 mcd	LED super bright white	transparent colourless	1.02.157.525/1000
24 - 28 V		LED green	transparent green	1.02.157.509/1503

Technical data see page 3 - 14

With integrated series resistor. Other voltages on request.

3

Integr.
LED