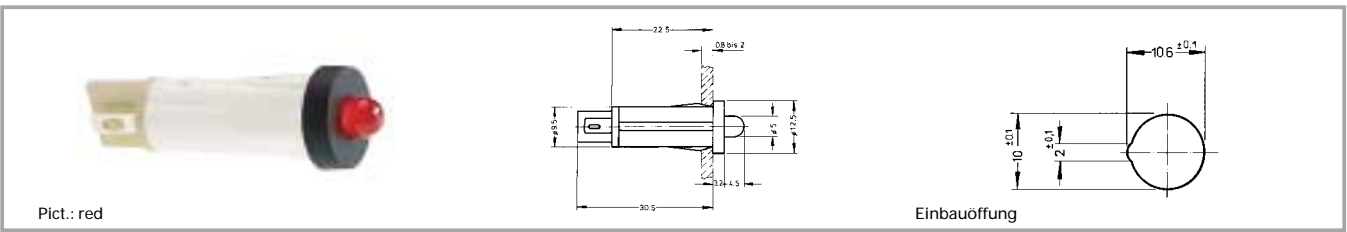


Signal lamps with integrated LED, 10 mm, protruding LED



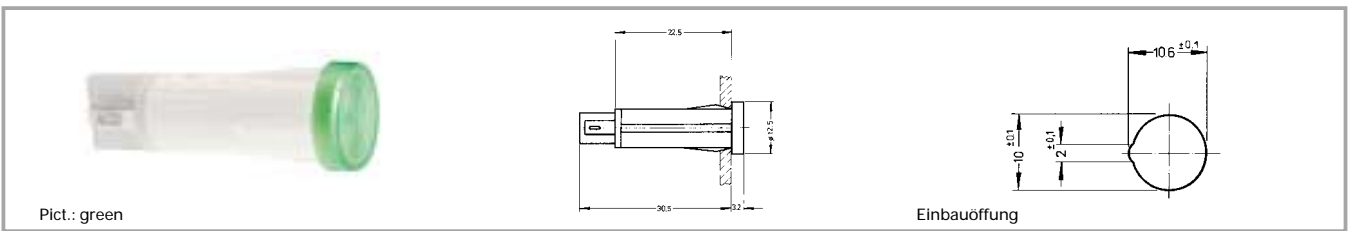
Integrated curren- cy resistor	Protecting diode	Operating voltage U_B	Forward current, I_F	Lamp	Light intensi- ty	Order no.
no	yes	according to series resistor 6 - 28 V	max. 20 mA	LED red	1000 mcd	1.69.525.051/0000
no	yes	according to series resistor 6 - 28 V	max. 20 mA	LED green	1000 mcd	1.69.525.056/0000
no	yes	according to series resistor 6 - 28 V	max. 20 mA	LED yellow	200 mcd	1.69.525.061/0000
no	no	according to series resistor 6 - 28 V	max. 20 mA	LED red	200 mcd	1.69.525.001/0000
no	no	according to series resistor 6 - 28 V	max. 20 mA	LED green	1000 mcd	1.69.525.006/0000
no	no	according to series resistor 6 - 28 V	max. 20 mA	LED yellow	200 mcd	1.69.525.011/0000
yes	yes	24 - 28 V	15 - 20 mA	LED red	200 mcd	1.69.525.054/0000
yes	yes	24 - 28 V	13 - 18.5 mA	LED green	1000 mcd	1.69.525.059/0000
yes	yes	24 - 28 V	13 - 18.5 mA	LED yellow	200 mcd	1.69.525.064/0000
yes	no	24 - 28 V	15 - 20 mA	LED red	200 mcd	1.69.525.004/0000
yes	no	24 - 28 V	13 - 18.5 mA	LED green	1000 mcd	1.69.525.009/0000
yes	no	24 - 28 V	13 - 18.5 mA	LED yellow	200 mcd	1.69.525.014/0000

Technical data see page 3 - 18

3

Integr.
LED

Signal lamps with integrated LED, 10 mm, round lens



Integrated current resistor	Protecting diode	Operating voltage U_B	Forward current, I_F	Lamp	Light intensity	Order no.
yes	yes	24 - 28 V	15 - 20 mA	LED red	200 mcd	1.69.525.255/1000
yes	yes	24 - 28 V	15 - 20 mA	LED red	200 mcd	1.69.525.255/1300
yes	yes	24 - 28 V	13 - 18.5 mA	LED green	1000 mcd	1.69.525.260/1000
yes	yes	24 - 28 V	13 - 18.5 mA	LED green	1000 mcd	1.69.525.260/1500
yes	yes	24 - 28 V	13 - 18.5 mA	LED yellow	200 mcd	1.69.525.265/1000
yes	yes	24 - 28 V	13 - 18.5 mA	LED yellow	200 mcd	1.69.525.265/1400
yes	yes	24 - 28 V		LED blue	300 mcd	1.69.525.266/1000
yes	yes	24 - 28 V		LED blue	300 mcd	1.69.525.266/1600
yes	yes	24 - 28 V		LED white	400 mcd	1.69.525.271/1000
yes	no	24 - 28 V	15 - 20 mA	LED red	200 mcd	1.69.525.205/1000
yes	no	24 - 28 V	15 - 20 mA	LED red	200 mcd	1.69.525.205/1300
yes	no	24 - 28 V	13 - 18.5 mA	LED green	1000 mcd	1.69.525.210/1000
yes	no	24 - 28 V	13 - 18.5 mA	LED green	1000 mcd	1.69.525.210/1500
yes	no	24 - 28 V	13 - 18.5 mA	LED yellow	200 mcd	1.69.525.215/1000
yes	no	24 - 28 V	13 - 18.5 mA	LED yellow	200 mcd	1.69.525.215/1400
yes	no	24 - 28 V		LED blue	300 mcd	1.69.525.216/1000
yes	no	24 - 28 V		LED blue	300 mcd	1.69.525.216/1600
yes	no	24 - 28 V		LED white	400 mcd	1.69.525.221/1000

Technical data see page 3 - 18

Other voltages on request.

3

Integr.
LED