

# PS-FA & PS-FB Series – Rugged Cylindrical Pressure Switch

- ▶ Wear Disc Design for Longer Life
- ▶ 0,35 to 420 bar (5 to 6000 PSI) Pressure Range
- ▶ 600 bar (9000 PSI) Proof Pressure

Gems PS-FA & PS-FB Series have all metal surfaces for overload stops and delivery reliable operations under extremely high pressure surges. They are designed with a wear disc and cushioning ring for an increased life span. The PS-FA & PS-FB Series provide the greatest protection for demanding applications. The switches use a piston/diaphragm design, which combine the high proof pressure of piston technology with the sensitivity of a diaphragm design. The switches can be field or factory adjusted.

## Specifications

<b>Process/Ambient Temperature</b>	-40°C to +80°C (-40°F to +176°F)
<b>Switch</b>	5 Amp SPDT@120/240 VAC and 12/24 VDC (>2 million cycles @ 1000 psi)
<b>Approvals</b>	Microswitch is UL and CSA Recognised
<b>Repeatability</b>	2% of Highest Set Point @ 20°C (70°F)
<b>Wetted Parts</b>	
<b>Diaphragm</b>	Buna-N (Optional EPDM or Viton®)
<b>Fitting</b>	Zinc-Plated Steel or 304 SS
<b>Housing</b>	IP65 (Nema 4) Zinc-Plated Steel (Optional 316 Stainless Steel)
<b>Electrical Termination</b>	DIN 43650A 18" (0.5m) Long, 18 AWG (0.82mm2) PVC Leads
<b>Pressure Port</b>	G or 1/4" NPT Male (Female with 304SS Fittings) (Optional 7/16"-20 UNF)
<b>Weight, Approximate</b>	0.5 lbs. (0.23 kg)

**How To Order** Use the **bold** characters from the chart below to construct a product code

**SELECT** PS -FB -1 -4G -C -HC -X

- Series \_\_\_\_\_  
 -FA Iside mounted DIN connection;  
 -FB top-mounted electrical connection
- Insert Range Code From Table Below \_\_\_\_\_
- Pressure Port \_\_\_\_\_  
 -4M 1/4" NPT male; -4G G 1/4 male; -4S 7/16-20" UNF male;  
 -4FS 1/4" NPT female 304 ss; -4BS G 1/4 female 304 ss
- Circuit (\*) \_\_\_\_\_  
 -C SPDT; -B SPST/NO; -CC DPDT; -AA DPST/NO; -BB DPST/NC
- Electrical Termination (#) \_\_\_\_\_  
 -FL flying leads; -FLWF flying leads w/weather pack connector; -H DIN male only;  
 -HC DIN connection w/strain relief; -HN DIN connection w/1/2" conduit
- Options \_\_\_\_\_  
 -1 Viton® diaphragm; -2 EPDM diaphragm; -3 316 ss housing; -7 gold electrical contacts;  
 -9 reduced deadband; B oxygen cleaned;  
 DIN connection w/light also available

Note: (+) For factory-set units indicate setting and units followed by -R for rising or -F for falling  
**Example:** PS-FA-50psi-R-4M-A-FL (50psi, Rising, 1/4" NPT, Normally Open Switch, Flying Leads)  
 (\*) lead wires required on all selections except -C SPDT option  
 (#) FA series options are DIN connection-style only

Range Code	Adjustable Range	Average Dead Band	Proof Pressure
-1	0.35-1.7 bar (5-25 psi)	0.15-0.30 bar (2-4 psi)	35 bar (500 psi)
-2	1-5 bar (15-75 psi)	0.35-0.7 bar (5-10 psi)	600 bar (9000 psi)
-2A	3.5-10 bar (50-150 psi)	0.7-1.4 bar (10-20 psi)	600 bar (9000 psi)
-3	10-45 bar (150-650 psi)	2.7-4 bar (40-60 psi)	600 bar (9000 psi)
-4A	35-120 bar (500-1750 psi)	8-14 bar (120-200 psi)	600 bar (9000 psi)
-4	70-240 bar (1000-3500 psi)	19-30 bar (275-425 psi)	600 bar (9000 psi)
-5	170-420 bar (2500-6000 psi)	36-50 bar (520-730 psi)	600 bar (9000 psi)

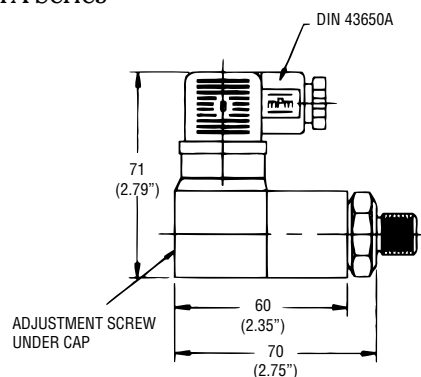


PS-FA Series

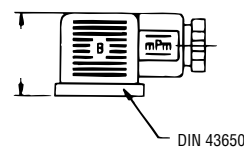
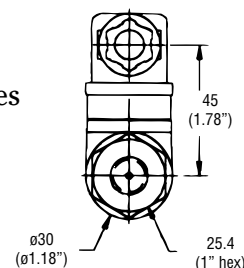
PS-FB Series

Dimensions mm (in.)

PS-FA Series



PS-FA Series



PS-FB Series

