

BMH 75



Absolute Multiturn Hollow-Shaft

SSI-Interface

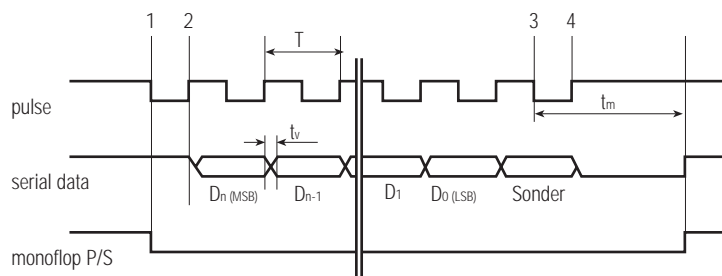
25 Bits (13 Bit/Rev. x 12 Bits Rev.)

10-30 Volts DC RS422 or RS485

Hollow-Shafts 10 – 50,8 mm

Supply Voltage	10 - 30 V DC
Current Consumption	60 mA (max)
Output Circuit	RS422 or RS485
Codes Available	Gray or Binary
Logic Level (high)	Vcc - 0.7 Volt
Logic Level (low)	0.25 Volt (max)
Short Circuit Protection	100 %

Cover	Aluminium
Body	Aluminium
Shaft	Stainless Steel
Speed	6000 RPM (max)
Torque	> 0.05 Nm
Loading	Axial 40 N, Radial 30 N
Protection	IP 65
Temperature	-20°...+70°C (-4°...+158°F) +100°C (+212°F) Optional
Weight	depends on Shaftsize (700-1200g)



Meyer Industrie-Electronic GmbH – MEYLE

Carl-Bosch-Straße 8

Tel.: (+49) 05481-9385-0

Internet: www.meyle.de

49525 Lengerich/Germany

Fax: (+49) 05481-9385-12

E-Mail: sales@meyle.de

