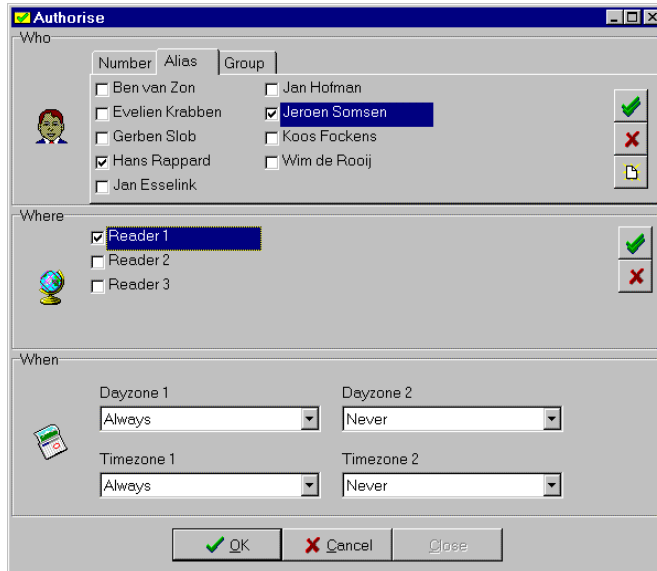


WinGate



WinGate is a 32-bit Windows application for handling access control authorisations.

Key features

- Authorise tags, objects or groups
- Set up reader behaviour
- Check reader status
- Request authorised tags
- Poll event messages
- Multi-language interface
- Windows oriented
- Up to 32 TRANSIT Extended readers

The WinGate access control software can be applied to set and control authorisation profiles of tags. WinGate allows you to associate a tag number with a person, vehicle, or other identifiable object. These objects may be categorised in groups. WinGate allows you to authorise (or deauthorise) tag numbers, objects and groups. WinGate also allows you to setup the TRANSIT Extended reader's behaviour, check the reader status, request currently authorised tags and poll event messages are as well some main features within WinGate. WinGate has a very user-friendly multi-language user interface. WinGate can determine and download authorisation profiles linked to tags, objects or groups into the TRANSIT Extended reader. Events are stored inside the reader(s) until WinGate retrieves them.

There are 14 programmable and 2 predefined day and time zones. When entering the dialog the current day/time zones settings are retrieved from the reader(s). It may be very useful, when replacing a reader or when placing a new reader in the multidrop loop, to copy all authorisations from one reader to another.

The number of tags that can be authorised is limited by the amount of memory placed inside the TRANSIT Extended reader. The TRANSIT Extended reader can store authorisation profiles of 1000 tags.

A single TRANSIT Extended reader can directly be connected to a serial port on the PC using RS232 communication. To connect multiple TRANSIT Extended readers, it is required that the readers are equipped with a MD-300 communication board. The MD-300 multidrop interface can be converted to RS-232 by means of a RS-232/RS-422 converter (see accessories).

WinGate communicates directly with the TRANSIT Extended readers without the intervention of a multidrop master. In fact the WinGate program is the multidrop master. A maximum of 32 TRANSIT Extended readers can be connected in a single master/slave network.

SPECIFICATIONS

TECHNICAL INFORMATION	WINGATE
Required platform	Windows 95/98/XP and NT4.0.
Applicable with readers	TRANSIT Extended reader (microwave reader) SimpleXS reader (inductive reader)
Interface	RS232
Communication protocols	proprietary communication
Part number	9881190 WinGate
Accessories	9880860 Optical isolator RS232/RS422 9874690 TRANSIT PS270 Extended reader

WinGate configuration example

